



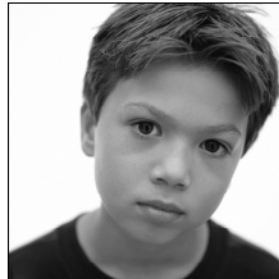
Detailed Summary Tables— Regional and Statewide

North Carolina Youth Tobacco Survey 2009

Middle School and High School Tables

N.C. Department of Health and Human Services

Surveillance and Evaluation Team
Tobacco Prevention and Control Branch
Department of Health and Human Services
1932 Mail Service Center
Raleigh, NC 27699-1932
919-707-5400
www.tobaccopreventionandcontrol.ncdhhs.gov



State of North Carolina | Beverly Perdue, Governor
Department of Health and Human Services
Lanier M. Cansler, Secretary
www.ncdhhs.gov

N.C. DHHS is an equal opportunity employer and provider. 03/10

List of Middle School Tables

Table MS-1	Percentage of middle school students who report ever using* any tobacco product (cigarettes, cigars, smokeless tobacco, kreteks, or bidis), by gender, grade, and race/ethnicity: State and Regional Comparisons- North Carolina Youth Tobacco Survey, 2009.
Table MS-2	Percentage of middle school students who report ever using* cigarettes, by gender, grade, and race/ethnicity: State and Regional Comparisons- North Carolina Youth Tobacco Survey, 2009.
Table MS-3	Percentage of middle school students who report ever using* smokeless tobacco, by gender, grade, and race/ethnicity: State and Regional Comparisons- North Carolina Youth Tobacco Survey, 2009.
Table MS-4	Percentage of middle school students who report current use* of any tobacco product (cigarettes, cigars, smokeless tobacco, pipes, or bidis), by gender, grade, and race/ethnicity: North Carolina Youth Tobacco Survey, 2009.
Table MS-5	Percentage of middle school students who report current use* of cigarettes, by gender, grade, and race/ethnicity: State and Regional Comparisons- North Carolina Youth Tobacco Survey, 2009.
Table MS-6	Percentage of middle school students who report current use* of smokeless tobacco, by gender, grade, and race/ethnicity: State and Regional Comparisons- North Carolina Youth Tobacco Survey, 2009.

List of High School Tables

Table HS-1	Percentage of high school students who report ever using* any tobacco product (cigarettes, cigars, smokeless tobacco, kreteks, or bidis), by gender, grade, and race/ethnicity: State and Regional Comparisons- North Carolina Youth Tobacco Survey, 2009.
Table HS-2	Percentage of high school students who report ever using* cigarettes, by gender, grade, and race/ethnicity: State and Regional Comparisons- North Carolina Youth Tobacco Survey, 2009.
Table HS-3	Percentage of high school students who report ever using* smokeless tobacco, by gender, grade, and race/ethnicity: State and Regional Comparisons- North Carolina Youth Tobacco Survey, 2009.
Table HS-4	Percentage of high school students who report current use* of any tobacco product (cigarettes, cigars, smokeless tobacco, kreteks, or bidis), by gender, grade, and race/ethnicity: State and Regional Comparisons- North Carolina Youth Tobacco Survey, 2009.
Table HS-5	Percentage of high school students who report current use* of cigarettes, by gender, grade, and race/ethnicity: State and Regional Comparisons- North Carolina Youth Tobacco Survey, 2009.
Table HS-6	Percentage of high school students who report current use* of smokeless tobacco, by gender, grade, and race/ethnicity: State and Regional Comparisons- North Carolina Youth Tobacco Survey, 2009.

TABLE MS-1. Percentage of middle school students who report ever using* any tobacco product (cigarettes, cigars, smokeless tobacco, kreteks, or bidis) by gender, grade, and race/ethnicity: State and Regional Comparisons- North Carolina Youth Tobacco Survey, 2009.

	State	Western (Mountain)	Piedmont (Central)	Eastern (Coastal)
Gender				
Female	25.7 (±3.8)†	29.7 (±6.9)	24.6 (±5.1)	26.6 (±7.1)
Male	34.3 (±3.2)	37.3 (±5.6)	34.5 (±4.7)	32.5 (±4.2)
Grade				
Sixth	20.4 (±3.2)	23.9 (±8.6)	19.3 (±4.5)	21.4 (±3.6)
Seventh	32.2 (±3.2)	35.8 (±9.0)	31.7 (±4.2)	31.4 (±4.7)
Eighth	38.1 (±6.1)	40.9 (±7.8)	37.7 (±8.7)	37.4 (±9.4)
Race/ethnicity				
White	26.3 (±3.3)	33.7 (±6.1)	24.2 (±4.8)	25.2 (±4.4)
Black	35.6 (±5.7)	36.5 (±7.7)	35.8 (±7.7)	34.9 (±7.4)
Hispanic	30.6 (±4.6)	26.0 (±11.3)	30.6 (±5.8)	32.7 (±8.2)
Other	38.9 (±14.5)	35.0 (±14.0)	40.1 (±17.2)	32.5 (±16.8)
Total	30.2 (±3.2)	33.6 (±5.6)	29.6 (±4.6)	29.8 (±4.6)

*Ever use of cigarettes was determined by asking, "Have you ever tried cigarette smoking, even one or two puffs?" Ever use of cigars was determined by asking, "Have you ever tried smoking cigars, cigarillos, or little cigars, even one or two puffs?" Ever use of smokeless tobacco was determined by asking, "Have you ever used chewing tobacco, snuff, or dip, such as Redman, Levi Garrett, Beechnut, Skoal, Skoal Bandits, or Copenhagen? Ever use of bidis and kreteks was determined by asking, "Have you ever tried smoking any of the following: 1) bidis, 2) kreteks?"

† Ninety-five percent confidence interval.

TABLE MS-2. Percentage of middle school students who report ever using* cigarettes by gender, grade, and race/ethnicity: State and Regional Comparisons- North Carolina Youth Tobacco Survey, 2009.

	State	Western (Mountain)	Piedmont (Central)	Eastern (Coastal)
Gender				
Female	18.6 (±3.3)†	21.9 (±6.3)	17.8 (±4.4)	19.1 (±6.5)
Male	23.3 (±3.3)	23.8 (±4.6)	23.5 (±4.7)	22.5 (±5.3)
Grade				
Sixth	12.3 (±2.7)	14.9 (±6.6)	12.2 (±3.9)	10.9 (±2.6)
Seventh	22.8 (±3.2)	25.3 (±8.9)	22.6 (±4.3)	22.0 (±5.0)
Eighth	28.1 (±5.5)	28.3 (±7.0)	27.3 (±7.6)	30.6 (±10.5)
Race/ethnicity				
White	18.4 (±2.9)	23.2 (±5.7)	17.5 (±4.2)	16.4 (±4.4)
Black	25.2 (±5.8)	24.1 (±5.6)	25.0 (±7.9)	26.0 (±8.2)
Hispanic	20.3 (±4.7)	16.5 (±8.3)	19.4 (±6.1)	25.7 (±7.8)
Other	27.4 (±12.5)	25.3 (±14.2)	28.3 (±15.0)	23.0 (±16.7)
Total	21.1 (±3.1)	22.9 (±4.9)	20.7 (±4.3)	20.9 (±4.9)

*Ever use of cigarettes was determined by asking, "Have you ever tried cigarette smoking, even one or two puffs?"

† Ninety-five percent confidence interval.

TABLE MS-3. Percentage of middle school students who report ever using* smokeless tobacco by gender, grade, and race/ethnicity: State and Regional Comparisons- North Carolina Youth Tobacco Survey, 2009.

	State	Western (Mountain)	Piedmont (Central)	Eastern (Coastal)
Gender				
Female	8.0 (±1.4)†	11.7 (±4.0)	7.1 (±1.9)	8.4 (±2.4)
Male	13.1 (±2.2)	20.2 (±4.3)	11.1 (±3.2)	14.4 (±2.9)
Grade				
Sixth	6.7 (±1.9)	11.5 (±4.5)	5.4 (±2.7)	7.3 (±2.4)
Seventh	12.5 (±2.1)	16.5 (±4.9)	11.4 (±2.9)	13.2 (±3.9)
Eighth	12.7 (±2.7)	20.0 (±4.9)	10.5 (±3.7)	14.5 (±2.9)
Race/ethnicity				
White	11.0 (±1.8)	17.2 (±2.8)	8.7 (±2.8)	11.7 (±2.8)
Black	10.0 (±2.2)	11.0 (±5.4)	9.4 (±2.9)	11.2 (±3.4)
Hispanic	8.5 (±2.4)	8.9 (±7.2)	7.5 (±2.8)	11.7 (±5.7)
Other	14.5 (±6.8)	11.7 (±8.0)	15.1 (±7.9)	12.4 (±10.6)
Total	10.6 (±1.3)	16.0 (±2.8)	9.2 (±1.8)	11.6 (±2.1)

*Ever use of smokeless tobacco was determined by asking, "Have you ever used chewing tobacco, snuff, or dip, such as Redman, Levi Garrett, Beechnut, Skoal, Skoal Bandits, or Copenhagen?"

† Ninety-five percent confidence interval.

TABLE MS-4. Percentage of middle school students who report current use* of any tobacco product (cigarettes, cigars, smokeless tobacco, kreteks, or bidis) by gender, grade, and race/ethnicity: State and Regional Comparisons- North Carolina Youth Tobacco Survey, 2009.

	State	Western (Mountain)	Piedmont (Central)	Eastern (Coastal)
Gender				
Female	9.4 (±2.5)†	10.2 (±3.5)	9.1 (±3.6)	9.8 (±3.3)
Male	11.4 (±2.4)	14.1 (±4.2)	9.8 (±3.2)	14.2 (±4.2)
Grade				
Sixth	5.3 (±1.3)	8.7 (±4.2)	3.7 (±1.5)	7.6 (±2.5)
Seventh	11.9 (±2.2)	13.6 (±4.9)	11.1 (±3.0)	13.0 (±3.6)
Eighth	14.4 (±3.3)	14.2 (±3.8)	13.8 (±4.7)	16.3 (±5.4)
Race/ethnicity				
White	9.0 (±2.2)	13.0 (±3.3)	7.2 (±3.3)	10.3 (±3.1)
Black	13.1 (±4.3)	7.5 (±3.4)	13.3 (±6.0)	13.5 (±4.5)
Hispanic	8.9 (±2.8)	9.4 (±5.3)	6.6 (±3.5)	17.2 (±9.7)
Other	17.1 (±3.8)	18.9 (±15.7)	17.0 (±4.2)	16.8 (±10.5)
Total	10.5 (±1.9)	12.2 (±3.0)	9.6 (±2.7)	12.2 (±3.1)

*Current use of cigarettes or cigars or smokeless tobacco or pipes or bidis or kreteks on 1 of the 30 days preceding the survey.

† Ninety-five percent confidence interval.

TABLE MS-5. Percentage of middle school students who report current use* of cigarettes by gender, grade, and race/ethnicity: State and Regional Comparisons- North Carolina Youth Tobacco Survey, 2009.

	State	Western (Mountain)	Piedmont (Central)	Eastern (Coastal)
Gender				
Female	4.1 (±2.5)†	5.1 (±2.1)	3.5 (±1.5)	5.3 (±2.9)
Male	4.3 (±1.6)	5.0 (±2.2)	3.3 (±2.1)	6.7 (±3.3)
Grade				
Sixth	1.4 (±0.7)	2.8 (±2.7)	0.9 (±0.7)	1.8 (±1.6)
Seventh	5.2 (±1.3)	6.5 (±3.8)	4.1 (±1.5)	8.0 (±2.5)
Eighth	6.3 (±2.2)	6.0 (±2.3)	5.5 (±3.0)	8.9 (±4.8)
Race/ethnicity				
White	4.4 (±1.5)	5.6 (±2.0)	3.6 (±2.3)	5.7 (±2.8)
Black	3.8 (±1.9)	2.3 (±1.7)	3.1 (±2.4)	5.7 (±3.4)
Hispanic	4.9 (±2.6)	3.4 (±3.2)	3.7 (±2.8)	10.4 (±9.5)
Other	6.2 (±2.5)	7.3 (±7.5)	6.0 (±2.9)	6.6 (±6.7)
Total	4.3 (±1.1)	5.1 (±1.7)	3.5 (±1.5)	6.1 (±2.6)

*Current use of cigarettes on 1 of the 30 days preceding the survey.

† Ninety-five percent confidence interval.

TABLE MS-6. Percentage of middle school students who report current use* of smokeless tobacco by gender, grade, and race/ethnicity: State and Regional Comparisons- North Carolina Youth Tobacco Survey, 2009.

	State	Western (Mountain)	Piedmont (Central)	Eastern (Coastal)
Gender				
Female	1.8 (±0.8)†	4.0 (±2.2)	1.4 (±1.0)	1.8 (±1.0)
Male	4.1 (±1.4)	7.8 (±2.9)	3.1 (±1.9)	4.8 (±2.3)
Grade				
Sixth	1.8 (±0.9)	4.7 (±2.5)	1.3 (±1.1)	1.7 (±1.3)
Seventh	3.4 (±1.0)	5.7 (±2.8)	2.9 (±1.3)	3.2 (±1.9)
Eighth	3.7 (±1.9)	7.5 (±3.2)	2.5 (±2.8)	5.2 (±2.0)
Race/ethnicity				
White	3.6 (±1.2)	6.7 (±2.2)	2.4 (±1.7)	4.2 (±2.3)
Black	2.0 (±1.2)	2.1 (±1.2)	2.1 (±1.6)	1.7 (±1.5)
Hispanic	2.2 (±1.6)	3.9 (±4.1)	0.8 (±1.4)	6.5 (±7.0)
Other	4.3 (±2.3)	9.6 (±10.7)	3.8 (±2.6)	2.6 (±4.2)
Total	3.0 (±0.7)	6.0 (±2.0)	2.2 (±0.9)	3.4 (±1.3)

*Current use of smokeless tobacco on 1 of the 30 days preceding the survey.

† Ninety-five percent confidence interval.

TABLE HS-1. Percentage of high school students who report ever using* any tobacco product (cigarettes, cigars, smokeless tobacco, kreteks, or bidis) by gender, grade, and race/ethnicity: State and Regional Comparisons- North Carolina Youth Tobacco Survey, 2009.

	State	Western (Mountain)	Piedmont (Central)	Eastern (Coastal)
Gender				
Female	47.7 (±3.7)†	54.6 (±6.6)	50.1 (±5.1)	48.8 (±4.8)
Male	56.8 (±5.1)	64.4 (±6.9)	45.9 (±5.4)	61.6 (±4.8)
Grade				
Ninth	39.7 (±5.0)	50.3 (±7.4)	53.9 (±7.4)	52.0 (±6.8)
Tenth	52.9 (±5.2)	58.5 (±5.8)	33.8 (±7.1)	52.6 (±10.5)
Eleventh	57.5 (±5.5)	65.5 (±8.3)	51.7 (±7.5)	53.1 (±7.3)
Twelfth	64.1 (±5.9)	67.7 (±10.9)	62.9 (±8.3)	65.5 (±9.0)
Race/ethnicity				
White	52.8 (±4.0)	59.4 (±6.2)	50.6 (±5.9)	53.4 (±5.1)
Black	54.1 (±5.4)	63.2 (±14.7)	52.1 (±7.1)	57.8 (±5.7)
Hispanic	43.0 (±7.8)	57.7 (±15.0)	39.5 (±9.8)	52.4 (±10.2)
Other	52.7 (±23.4)	57.0 (±16.6)	50.7 (±29.7)	64.3 (±14.5)
Total	52.5 (±3.5)	59.6 (±6.1)	50.1 (±5.1)	55.3 (±3.7)

*Ever use of cigarettes was determined by asking, "Have you ever tried cigarette smoking, even one or two puffs?" Ever use of cigars was determined by asking, "Have you ever tried smoking cigars, cigarillos, or little cigars, even one or two puffs?" Ever use of smokeless tobacco was determined by asking, "Have you ever used chewing tobacco, snuff, or dip, such as Redman, Levi Garrett, Beechnut, Skoal, Skoal Bandits, or Copenhagen? Ever use of bidis and kreteks was determined by asking, "Have you ever tried smoking any of the following: 1) bidis, 2) kreteks?"

† Ninety-five percent confidence interval.

TABLE HS-2. Percentage of high school students who report ever using* cigarettes by gender, grade, and race/ethnicity: State and Regional Comparisons- North Carolina Youth Tobacco Survey, 2009.

	State	Western (Mountain)	Piedmont (Central)	Eastern (Coastal)
Gender				
Female	41.3 (±3.5)†	48.7 (±7.4)	39.0 (±4.8)	44.0 (±5.4)
Male	46.5 (±5.0)	48.8 (±6.2)	45.1 (±7.1)	50.0 (±4.1)
Grade				
Ninth	31.4 (±4.6)	37.2 (±5.5)	26.6 (±6.5)	43.9 (±5.8)
Tenth	44.9 (±5.4)	46.1 (±7.2)	44.5 (±7.4)	45.7 (±10.2)
Eleventh	49.1 (±5.1)	55.8 (±8.5)	48.6 (±6.6)	45.7 (±10.1)
Twelfth	55.1 (±6.1)	60.4 (±11.8)	54.0 (±8.6)	54.7 (±7.2)
Race/ethnicity				
White	44.3 (±3.8)	49.0 (±6.3)	42.7 (±5.5)	44.6 (±4.9)
Black	44.8 (±6.4)	47.2 (±17.1)	42.7 (±8.5)	50.0 (±5.3)
Hispanic	37.9 (±7.1)	43.6 (±14.9)	35.7 (±8.9)	46.8 (±10.3)
Other	47.1 (±23.2)	56.8 (±16.3)	44.6 (±29.2)	56.4 (±16.3)
Total	44.1 (±3.6)	48.8 (±6.2)	42.2 (±5.1)	47.1 (±3.7)

*Ever use of cigarettes was determined by asking, "Have you ever tried cigarette smoking, even one or two puffs?"

† Ninety-five percent confidence interval.

TABLE HS-3. Percentage of high school students who report ever using* smokeless tobacco by gender, grade, and race/ethnicity: State and Regional Comparisons- North Carolina Youth Tobacco Survey, 2009.

	State	Western (Mountain)	Piedmont (Central)	Eastern (Coastal)
Gender				
Female	9.8 (±1.6)†	15.8 (±4.5)	9.0 (±2.2)	8.3 (±2.1)
Male	27.8 (±5.2)	39.7 (±7.1)	25.0 (±7.4)	28.8 (±4.4)
Grade				
Ninth	14.6 (±3.8)	27.0 (±8.4)	10.3 (±4.8)	20.6 (±7.2)
Tenth	18.2 (±4.1)	27.1 (±5.7)	17.5 (±5.8)	13.9 (±4.8)
Eleventh	20.8 (±5.0)	27.3 (±8.8)	20.7 (±6.9)	16.4 (±6.4)
Twelfth	24.6 (±5.4)	31.2 (±10.9)	23.7 (±7.3)	23.0 (±9.0)
Race/ethnicity				
White	24.5 (±4.4)	30.3 (±6.1)	22.5 (±6.5)	24.9 (±5.6)
Black	11.5 (±2.9)	20.6 (±8.9)	11.1 (±3.9)	10.9 (±3.2)
Hispanic	10.1 (±3.7)	7.9 (±7.3)	9.1 (±4.5)	16.8 (±7.6)
Other	20.9 (±12.9)	24.6 (±10.7)	20.7 (±16.2)	18.0 (±13.8)
Total	19.0 (±3.2)	27.9 (±5.4)	17.3 (±4.5)	18.5 (±3.1)

* Ever use of smokeless tobacco was determined by asking, "Have you ever used chewing tobacco, snuff, or dip, such as Redman, Levi Garrett, Beechnut, Skoal, Skoal Bandits, or Copenhagen?"

† Ninety-five percent confidence interval.

TABLE HS-4. Percentage of high school students who report current use* of any tobacco product (cigarettes, cigars, smokeless tobacco, kreteks, or bidis) by gender, grade, and race/ethnicity: State and Regional Comparisons- North Carolina Youth Tobacco Survey, 2009.

	State	Western (Mountain)	Piedmont (Central)	Eastern (Coastal)
Gender				
Female	20.2 (±3.2)†	26.1 (±4.1)	19.5 (±4.6)	18.1 (±3.4)
Male	30.8 (±5.2)	35.1 (±5.9)	29.1 (±7.4)	33.5 (±6.3)
Grade				
Ninth	18.2 (±5.4)	26.4 (±6.2)	13.9 (±7.7)	27.2 (±6.1)
Tenth	24.7 (±4.6)	28.9 (±6.9)	24.0 (±6.2)	24.0 (±8.4)
Eleventh	27.4 (±3.7)	34.1 (±7.9)	27.6 (±4.5)	22.1 (±6.7)
Twelfth	35.9 (±5.6)	36.3 (±9.2)	37.2 (±7.8)	30.9 (±7.4)
Race/ethnicity				
White	28.3 (±2.9)	30.9 (±4.0)	27.4 (±4.0)	28.5 (±5.6)
Black	21.8 (±5.7)	36.2 (±12.1)	20.2 (±7.6)	23.5 (±4.0)
Hispanic	18.5 (±6.5)	16.5 (±8.6)	18.1 (±8.4)	22.2 (±9.0)
Other	37.5 (±15.2)	35.7 (±9.6)	38.1 (±19.0)	34.7 (±17.8)
Total	25.8 (±3.2)	30.8 (±3.5)	24.6 (±4.6)	26.1 (±4.2)

*Current use of cigarettes or cigars or smokeless tobacco or pipes or bidis or kreteks on 1 of the 30 days preceding the survey.

† Ninety-five percent confidence interval.

TABLE HS-5. Percentage of high school students who report current use* of cigarettes by gender, grade, and race/ethnicity: State and Regional Comparisons- North Carolina Youth Tobacco Survey, 2009.

	State	Western (Mountain)	Piedmont (Central)	Eastern (Coastal)
Gender				
Female	13.7 (±2.9)†	19.5 (±4.1)	13.0 (±4.3)	11.8 (±2.4)
Male	19.2 (±3.8)	18.3 (±4.7)	18.5 (±5.4)	22.2 (±3.5)
Grade				
Ninth	10.3 (±3.9)	11.8 (±3.5)	7.7 (±5.4)	18.3 (±5.2)
Tenth	16.3 (±4.1)	15.6 (±4.1)	17.1 (±6.0)	14.3 (±5.7)
Eleventh	18.9 (±3.8)	23.8 (±7.1)	19.1 (±5.1)	14.8 (±5.5)
Twelfth	23.2 (±4.9)	27.9 (±7.9)	22.7 (±6.7)	21.6 (±7.0)
Race/ethnicity				
White	19.7 (±2.5)	19.4 (±4.0)	19.4 (±3.6)	21.3 (±4.8)
Black	11.6 (±4.6)	19.4 (±10.5)	10.8 (±6.3)	12.5 (±3.8)
Hispanic	11.8 (±4.7)	7.0 (±5.9)	11.3 (±6.0)	17.1 (±8.1)
Other	24.7 (±15.9)	24.0 (±17.6)	25.5 (±19.8)	18.0 (±16.4)
Total	16.7 (±2.7)	18.9 (±3.2)	16.0 (±3.9)	17.3 (±2.7)

* Current use of cigarettes on 1 of the 30 days preceding the survey.

† Ninety-five percent confidence interval.

TABLE HS-6. Percentage of high school students who report current use* of smokeless tobacco by gender, grade, and race/ethnicity: State and Regional Comparisons- North Carolina Youth Tobacco Survey, 2009.

	State	Western (Mountain)	Piedmont (Central)	Eastern (Coastal)
Gender				
Female	2.5 (±0.8)†	4.4 (±1.7)	2.2 (±1.1)	2.0 (±1.3)
Male	14.1 (±3.6)	20.9 (±5.9)	12.7 (±5.0)	14.0 (±4.1)
Grade				
Ninth	7.9 (±3.1)	13.3 (±5.4)	5.6 (±4.1)	11.9 (±5.1)
Tenth	8.3 (±2.7)	10.1 (±6.1)	8.4 (±3.8)	6.8 (±3.1)
Eleventh	8.3 (±2.1)	13.4 (±6.2)	8.2 (±2.5)	4.8 (±3.9)
Twelfth	10.3 (±3.2)	15.7 (±9.1)	9.6 (±4.1)	8.4 (±3.3)
Race/ethnicity				
White	10.9 (±2.6)	13.9 (±3.6)	9.6 (±3.7)	11.7 (±5.0)
Black	5.9 (±2.0)	11.0 (±8.1)	6.3 (±2.7)	4.0 (±1.2)
Hispanic	2.7 (±2.2)	1.3 (±2.4)	2.3 (±2.6)	5.9 (±4.7)
Other	8.1 (±6.9)	15.2 (±10.3)	6.9 (±8.5)	9.4 (±8.3)
Total	8.5 (±2.0)	12.9 (±3.4)	7.7 (±2.8)	8.2 (±2.8)

* Current use of smokeless tobacco on 1 of the 30 days preceding the survey.

† Ninety-five percent confidence interval.