



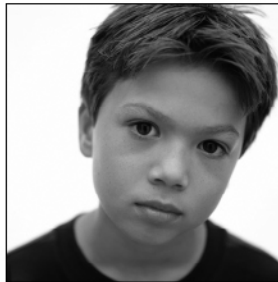
Detailed Summary Tables— Eastern Region (1)

North Carolina Youth Tobacco Survey 2009

Middle School and High School Tables

N.C. Department of Health and Human Services

Surveillance and Evaluation Team
Tobacco Prevention and Control Branch
Department of Health and Human Services
1932 Mail Service Center
Raleigh, NC 27699-1932
919-707-5400
www.tobaccopreventionandcontrol.ncdhhs.gov



State of North Carolina | Beverly Perdue, Governor
Department of Health and Human Services
Lanier M. Cansler, Secretary
www.ncdhhs.gov

N.C. DHHS is an equal opportunity employer and provider. 03/10

List of Middle School Tables

Table MS-1	Percentage of middle school students who report ever using* any tobacco product (cigarettes, cigars, smokeless tobacco), by gender, grade, and race/ethnicity: North Carolina Youth Tobacco Survey, 2009—Coastal (Eastern).
Table MS-2	Percentage of middle school students who report current use of any tobacco product (cigarettes, cigars, smokeless tobacco, pipes, or bidis) by gender, grade, and race/ethnicity: North Carolina Youth Tobacco Survey, 2009—Coastal (Eastern).
Table MS-3	Percentage of middle school students who report first using* cigarettes before 11 years of age and ever smoking 100 cigarettes in their lifetime, by gender, grade, race/ethnicity: North Carolina Youth Tobacco Survey, 2009—Coastal (Eastern).
Table MS-4	Percentage of middle school students who report smoking cigarettes on school property during the 30 days preceding the survey, by gender, grade, race/ethnicity: North Carolina Youth Tobacco Survey, 2009—Coastal (Eastern).
Table MS-5	Percentage of middle school students who report frequently using* cigarettes, by gender, grade, race/ethnicity: North Carolina Youth Tobacco Survey, 2009--Coastal (Eastern).
Table MS-6	Percentage of middle school current smoking students who report their primary sources of cigarettes, by social source, direct purchase, and other sources: North Carolina Youth Tobacco Survey, 2009—Coastal (Eastern).
Table MS-7	Percentage of middle school students who report smoking intentions, perceptions about smoking and susceptibility* to start smoking, by gender, grade, and race/ethnicity: North Carolina Youth Tobacco Survey, 2009—Coastal (Eastern).
Table MS-8	Percentage of middle school students who report media and advertising influence regarding tobacco and receptivity to tobacco advertising*, by gender, grade, and race/ethnicity: North Carolina Youth Tobacco Survey, 2009—Coastal (Eastern).
Table MS-9	Percentage of middle school students who report exposure to anti-tobacco education in school or community in the past year, by gender, grade, and race/ethnicity: North Carolina Youth Tobacco Survey, 2009—Coastal (Eastern).
Table MS-10	Percentage of middle school never smoking students who report they were in the same room or rode in car with someone who was smoking on 1 of the past 7 days, by gender, grade, race/ethnicity: North Carolina Youth Tobacco Survey, 2009—Coastal (Eastern).
Table MS-11	Percentage of middle school never and current smoking students who report currently living with someone who smokes cigarettes, by gender, grade, and race/ethnicity: North Carolina Youth Tobacco Survey, 2009—Eastern (Coastal).
Table MS-12	Percentage of middle school current smoking students who report quitting perceptions, intention to quit and cessation practices, by gender, grade, and race/ethnicity: North Carolina Youth Tobacco Survey, 2009—Coastal (Eastern).
Table MS-13	Percentage of middle school never and current smoking students who report smoking perceptions, by gender, grade, and race/ethnicity: North Carolina Youth Tobacco Survey, 2009—Coastal (Eastern).
Table MS-14	Percentage of middle school never and current smoking students who report smoking perceptions, by gender, grade, and race/ethnicity: North Carolina Youth Tobacco Survey, 2009—Coastal (Eastern).

List of High School Tables

Table	Percentage of high school students who report ever using* any tobacco product (cigarettes, cigars, smokeless tobacco) by gender, grade, and race/ethnicity: North Carolina Youth Tobacco Survey, 2009—Coastal (Eastern).
HS-1	
Table	Percentage of high school students who report current use of any tobacco product (cigarettes, cigars, smokeless tobacco, pipes, or bidis) by gender, grade, and race/ethnicity: North Carolina Youth Tobacco Survey, 2009—Coastal (Eastern).
HS-2	
Table	Percentage of high school students who report first using* cigarettes before 11 years of age and ever smoking 100 cigarettes in their lifetime, by gender, grade, race/ethnicity: North Carolina Youth Tobacco Survey, 2009—Coastal (Eastern).
HS-3	
Table	Percentage of high school students who report smoking cigarettes on school property during the 30 days preceding the survey, by gender, grade, race/ethnicity: North Carolina Youth Tobacco Survey, 2009—Coastal (Eastern).
HS-4	
Table	Percentage of high school students who report frequently using* cigarettes, by gender, grade, race/ethnicity: North Carolina Youth Tobacco Survey, 2009—Coastal (Eastern).
HS-5	
Table	Percentage of high school current smoking students who report their primary sources of cigarettes, by social source, direct purchase, and other sources: North Carolina Youth Tobacco Survey, 2009—Coastal (Eastern).
HS-6	
Table	Percentage of high school students who report smoking intentions, perceptions about smoking and susceptibility* to start smoking, by gender, grade, and race/ethnicity: North Carolina Youth Tobacco Survey, 2009—Coastal (Eastern).
HS-7	
Table	Percentage of high school students who report media and advertising influence regarding tobacco and receptivity to tobacco advertising*, by gender, grade, and race/ethnicity: North Carolina Youth Tobacco Survey, 2009—Coastal (Eastern).
HS-8	
Table	Percentage of high school students who report exposure to anti-tobacco education in school or community in the past year, by gender, grade, and race/ethnicity: North Carolina Youth Tobacco Survey, 2009—Coastal (Eastern).
HS-9	
Table	Percentage of high school never smoking students who report they were in the same room or rode in car with someone who was smoking on 1 of the past 7 days, by gender, grade, race/ethnicity: North Carolina Youth Tobacco Survey, 2009—Coastal (Eastern).
HS-10	
Table	Percentage of high school never and current smoking students who report one or more smokers among their four closest friends, by gender, grade, and race/ethnicity: North Carolina Youth Tobacco Survey, 2009—Coastal (Eastern).
HS-11	
Table	Percentage of high school current smoking students who report quitting perceptions, intention to quit and cessation practices, by gender, grade, and race/ethnicity: North Carolina Youth Tobacco Survey, 2009—Coastal (Eastern).
HS-12	
Table	Percentage of high school never and current smoking students who report smoking perceptions, by gender, grade, and race/ethnicity: North Carolina Youth Tobacco Survey, 2009—Coastal (Eastern).
HS-13	
Table	Percentage of high school never and current smoking students who report smoking perceptions, by gender, grade, and race/ethnicity: North Carolina Youth Tobacco Survey, 2009—Coastal (Eastern).
HS-14	

TABLE MS-1. Percentage of middle school students who report ever using* any tobacco product (cigarettes, cigars, smokeless tobacco) by gender, grade, and race/ethnicity: North Carolina Youth Tobacco Survey, 2009—Eastern (Coastal)

	Any tobacco	Cigarettes	Cigars	Smokeless tobacco
Gender				
Female	26.6 (±7.1)	19.1 (±6.5)	12.7 (±3.4)	8.4 (±2.4)
Male	32.5 (±4.2)	22.5 (±5.3)	16.3 (±3.6)	14.4 (±2.9)
Grade				
Sixth	21.4 (±3.6)	10.9 (±2.6)	10.5 (±2.9)	7.3 (±2.4)
Seventh	31.4 (±4.7)	22.0 (±5.0)	15.4 (±3.6)	13.2 (±3.9)
Eighth	37.4 (±9.4)	30.6 (±10.5)	18.4 (±4.5)	14.5 (±2.9)
Race/ethnicity				
White	25.2 (±4.4)	16.4 (±4.4)	12.8 (±3.0)	11.7 (±2.8)
Black	34.9 (±7.4)	26.0 (±8.2)	16.4 (±3.7)	11.2 (±3.4)
Hispanic	32.7 (±8.2)	25.7 (±7.8)	16.2 (±5.8)	11.7 (±5.7)
Other	32.5 (±16.8)	23.0 (±16.7)	22.2 (±16.5)	12.4 (±10.6)
Total	29.8 (±4.6)	20.9 (±4.9)	14.6 (±2.5)	11.6 (±2.1)

*Ever use of cigarettes was determined by asking, "Have you ever tried cigarette smoking, even one or two puffs?" Ever use of cigars was determined by asking, "Have you ever tried smoking cigars, cigarillos, or little cigars, even one or two puffs?" Ever use of smokeless tobacco was determined by asking, "Have you ever used chewing tobacco, snuff, or dip, such as Redman, Levi Garrett, Beechnut, Skoal, Skoal Bandits, or Copenhagen?"

† Ninety-five percent confidence interval.

TABLE MS-2. Percentage of middle school students who report current use of any tobacco product (cigarettes, cigars, smokeless tobacco, pipes, or bidis) by gender, grade, and race/ethnicity: North Carolina Youth Tobacco Survey, 2009— Eastern (Coastal)

	Any tobacco*	Cigarettes	Cigars	Smokeless tobacco	Pipes	Bidis
Gender						
Female	9.8 (±3.3)	5.3 (±2.9)	4.9 (±2.6)	1.8 (±1.0)	1.6 (±1.0)	1.6 (±1.0)
Male	14.2 (±4.2)	6.7 (±3.3)	6.6 (±2.9)	4.8 (±2.3)	3.1 (±1.7)	3.4 (±1.4)
Grade						
Sixth	7.6 (±2.5)	1.8 (±1.6)	5.2 (±2.4)	1.7 (±1.3)	1.0 (±1.4)	2.0 (±1.4)
Seventh	13.0 (±3.6)	8.0 (±2.5)	5.8 (±2.2)	3.2 (±1.9)	3.2 (±1.4)	2.7 (±1.4)
Eighth	16.3 (±5.4)	8.9 (±4.8)	6.5 (±4.4)	5.2 (±2.0)	3.1 (±2.4)	2.8 (±2.1)
Race/ethnicity						
White	10.3 (±3.1)	5.7 (±2.8)	3.7 (±1.5)	4.2 (±2.3)	2.1 (±1.0)	1.3 (±0.6)
Black	13.5 (±4.5)	5.7 (±3.4)	8.0 (±3.6)	1.7 (±1.5)	2.4 (±1.5)	3.6 (±1.8)
Hispanic	17.2 (±9.7)	10.4 (±9.5)	8.2 (±7.4)	6.5 (±7.0)	4.2 (±6.2)	4.8 (±5.4)
Other	16.8 (±10.5)	6.6 (±6.7)	6.8 (±6.1)	2.6 (±4.2)	3.8 (±4.2)	2.8 (±2.9)
Total	12.2 (±3.1)	6.1 (±2.6)	5.8 (±2.3)	3.4 (±1.3)	2.4 (±0.9)	2.5 (±0.8)

*Current use of cigarettes or cigars or smokeless tobacco or pipes or bidis or kreteks on 1 of the 30 days preceding the survey.

† Ninety-five percent confidence interval.

TABLE MS-3. Percentage of middle school students who report first using* cigarettes before 11 years of age and ever smoking 100 cigarettes in their lifetime, by gender, grade, race/ethnicity: North Carolina Youth Tobacco Survey, 2009— Eastern (Coastal).

	Ever smokers who smoked first whole cigarette before age 11	Ever smokers who smoked 100+ cigarettes in their lifetime
Gender		
Female	19.3 (±9.0)†	3.2 (±4.2)
Male	27.1 (±10.9)	9.9 (±6.4)
Grade		
Sixth	33.0 (±11.9)	0.0 (±0.0)
Seventh	28.2 (±7.1)	11.5 (±4.4)
Eighth	17.4 (±12.6)	6.3 (±8.1)
Race/ethnicity		
White	25.4 (±11.3)	8.1 (±5.7)
Black	21.6 (±10.5)	4.2 (±4.6)
Hispanic	31.7 (±19.6)	16.1 (±20.3)
Other	17.1 (±18.7)	3.7 (±7.6)
Total	24.1 (±8.4)	6.9 (±4.1)

*Age of initiation was determined by asking students these questions: "How old were you when you smoked a whole cigarette for the first time?"

† Ninety-five percent confidence interval.

TABLE MS-4. Percentage of middle school students who report smoking cigarettes on school property during the 30 days preceding the survey, by gender, grade, race/ethnicity: North Carolina Youth Tobacco Survey, 2009— Eastern (Coastal).

	Smoked on school property past 30 days
Gender	
Female	0.6 (±0.7)†
Male	2.8 (±1.5)
Grade	
Sixth	0.4 (±0.8)
Seventh	2.7 (±1.5)
Eighth	2.2 (±1.4)
Race/ethnicity	
White	1.4 (±1.0)
Black	1.4 (±1.1)
Hispanic	6.0 (±6.1)
Other	0.0 (±0.0)
Total	1.8 (±0.8)

† Ninety-five percent confidence interval.

TABLE MS-5. Percentage of middle school students who report frequently using* cigarettes, by gender, grade, race/ethnicity: North Carolina Youth Tobacco Survey, 2009— Eastern (Coastal)

	Frequent cigarette smoking
Gender	
Female	0.5 (±0.6)†
Male	0.7 (±0.6)
Grade	
Sixth	0.0 (±0.0)
Seventh	1.3 (±1.0)
Eighth	0.4 (±0.8)
Race/ethnicity	
White	0.5 (±0.6)
Black	0.6 (±0.6)
Hispanic	0.9 (±1.5)
Other	0.0 (±0.0)
Total	0.6 (±0.3)

* Smoked cigarettes, on 20 of the 30 days preceding the survey

† Ninety-five percent confidence interval.

TABLE MS-6. Percentage of middle school current smoking students who report their primary sources of cigarettes, by social source, direct purchase, and other sources: North Carolina Youth Tobacco Survey, 2009— Eastern (Coastal).

	Current Smoker
Social Sources:	
Gave someone else money to buy them for me	19.1 (±7.2)†
Borrowed (or bummed) them from someone else	19.2 (±11.3)
Person 18 years or older gave them to me	5.6 (±3.6)
Direct Purchase:	
Bought them in a store such as a convenience store, supermarket, discount store, or gas station	6.8 (±8.1)
Bought them from a vending machine	1.2 (±2.4)
Other Sources:	
Took them from store or family member	21.7 (±9.3)
Got them some other way	26.5 (±10.8)
Total	100

† Ninety-five percent confidence interval.

TABLE MS-7. Percentage of middle school students who report smoking intentions, perceptions about smoking and susceptibility* to start smoking, by gender, grade, and race/ethnicity: North Carolina Youth Tobacco Survey, 2009—Eastern (Coastal).

	Never smoked who will not try a cigarette soon	Never smoked who will not be smoking cigarettes during the next year	Never smoked who definitely will not smoke if one of their best friends offers them a cigarette	Have been told by at least one parent (or guardian) about the dangers of tobacco use	Think people can get addicted to using tobacco just like getting addicted to cocaine or heroin	Think young people who smoke cigarettes have more friends	Think smoking cigarettes makes young people look cool or fit in	Never smokers susceptible to start smoking
Gender								
Female	93.3 (±2.1)†	87.2 (±3.1)	85.2 (±3.4)	74.3 (±4.3)	91.8 (±2.9)	22.6 (±5.3)	14.4 (±3.5)	19.3 (±3.5)
Male	96.3 (±1.6)	87.5 (±3.9)	83.8 (±4.9)	66.7 (±4.5)	88.7 (±4.0)	24.2 (±5.0)	18.8 (±3.6)	23.3 (±4.8)
Grade								
Sixth	96.4 (±1.3)	91.4 (±3.2)	87.7 (±4.0)	75.0 (±5.6)	88.9 (±7.0)	18.6 (±4.9)	12.3 (±2.4)	15.2 (±3.9)
Seventh	92.7 (±2.6)	84.8 (±3.5)	83.2 (±4.3)	69.3 (±4.1)	90.5 (±3.0)	27.4 (±5.0)	17.3 (±3.0)	25.2 (±4.4)
Eighth	95.0 (±2.3)	85.2 (±5.7)	82.1 (±6.6)	66.4 (±4.8)	91.0 (±2.9)	24.7 (±5.7)	20.6 (±5.3)	24.9 (±6.0)
Race/ethnicity								
White	95.9 (±1.8)	88.4 (±3.4)	84.5 (±3.6)	73.9 (±3.8)	94.6 (±2.4)	15.3 (±2.7)	11.9 (±2.7)	19.0 (±4.0)
Black	93.2 (±3.3)	85.4 (±4.9)	83.3 (±5.3)	65.0 (±4.7)	84.0 (±4.4)	32.7 (±6.3)	23.6 (±5.3)	25.6 (±6.1)
Hispanic	94.2 (±5.4)	88.0 (±6.2)	89.3 (±5.6)	70.3 (±6.0)	89.8 (±6.1)	28.0 (±8.4)	14.5 (±6.4)	17.7 (±6.8)
Other	98.1 (±2.7)	98.2 (±2.5)	90.9 (±4.8)	72.4 (±8.5)	90.9 (±4.4)	31.8 (±14.9)	13.4 (±7.5)	20.0 (±6.7)
Total	94.9 (±1.4)	87.4 (±2.8)	84.5 (±3.5)	70.2 (±3.2)	90.1 (±3.3)	23.4 (±4.0)	16.7 (±2.7)	21.3 (±3.6)

* Students were considered not susceptible if they answered, “No, will not try a cigarette soon” and “Definitely no, will not smoke in the next year” and “Definitely no, would not smoke if best friend offered.” All other students were considered susceptible.

† Ninety-five percent confidence interval.

TABLE MS-8. Percentage of middle school students who report media and advertising influence regarding tobacco and receptivity to tobacco advertising*, by gender, grade, and race/ethnicity: North Carolina Youth Tobacco Survey, 2009— Eastern (Coastal)

	Saw or heard anti-smoking commercials during the past 30 days	Watch TV or movies who see actors using tobacco (most or some of the time)	Use Internet and see Internet ads for tobacco products (most or some of the time)	Use Internet, watch TV, or go to movies who see (most or some of the time) ads for tobacco products	Receptive to tobacco advertising
Gender					
Female	67.2 (±4.2)†	74.7 (±4.1)	40.8 (±4.8)	79.7 (±3.3)	5.4 (±2.6)
Male	60.5 (±4.3)	77.9 (±3.8)	39.7 (±5.8)	82.1 (±4.0)	9.8 (±2.4)
Grade					
Sixth	62.2 (±5.1)	69.9 (±5.4)	37.0 (±6.8)	74.3 (±5.3)	5.2 (±2.4)
Seventh	63.4 (±5.6)	77.5 (±3.2)	42.2 (±4.9)	82.2 (±3.4)	6.9 (±1.7)
Eighth	65.8 (±6.2)	82.3 (±6.3)	41.7 (±6.3)	87.1 (±3.9)	11.0 (±2.9)
Race/ethnicity					
White	63.0 (±4.6)	74.3 (±4.2)	39.9 (±4.7)	77.9 (±4.1)	8.9 (±1.9)
Black	65.7 (±4.6)	79.4 (±2.8)	41.5 (±7.0)	84.8 (±3.3)	6.0 (±2.0)
Hispanic	58.5 (±11.1)	74.6 (±6.3)	35.6 (±6.8)	81.4 (±8.0)	7.0 (±7.6)
Other	68.5 (±14.0)	73.2 (±10.9)	49.6 (±13.3)	79.1 (±10.0)	12.0 (±6.9)
Total	63.6 (±3.6)	76.2 (±3.2)	40.2 (±3.5)	80.9 (±2.8)	7.6 (±1.9)

* The percentage of students who received anything with a tobacco company name or picture on it AND who would (Definitely Yes or Probably Yes) use or wear something with a tobacco company name or picture on it.

† Ninety-five percent confidence interval.

TABLE MS-9. Percentage of middle school students who report exposure to anti-tobacco education in school or community in the past year, by gender, grade, and race/ethnicity: North Carolina Youth Tobacco Survey, 2009— Eastern (Coastal)

	Were taught about the dangers of tobacco use at school	At school this year practiced ways to say 'No' to tobacco
Gender		
Female	37.5 (±5.5)†	23.4 (±4.5)
Male	35.4 (±4.9)	21.3 (±4.6)
Grade		
Sixth	36.1 (±9.1)	20.5 (±7.2)
Seventh	40.1 (±5.6)	23.4 (±7.2)
Eighth	33.1 (±5.3)	23.4 (±4.6)
Race/ethnicity		
White	37.0 (±5.9)	19.0 (±4.8)
Black	36.4 (±4.9)	27.6 (±4.3)
Hispanic	27.8 (±11.3)	17.6 (±8.2)
Other	47.1 (±10.9)	21.0 (±9.0)
Total	36.3 (±4.3)	22.3 (±3.5)

† Ninety-five percent confidence interval.

TABLE MS-10. Percentage of middle school never smoking students who report they were in the same room or rode in car with someone who was smoking on 1 of the past 7 days, by gender, grade, race/ethnicity: North Carolina Youth Tobacco Survey, 2009— Eastern (Coastal)

	Were in the same room with someone who was smoking a cigarette on 1+ days during past 7 days	Rode in the same car with someone who was smoking a cigarette on 1+ days during past 7 days
Gender		
Female	44.3 (±6.0)†	31.5 (±4.8)
Male	34.1 (±6.6)	28.0 (±6.7)
Grade		
Sixth	33.2 (±5.6)	25.8 (±6.6)
Seventh	46.1 (±5.7)	35.8 (±6.3)
Eighth	39.8 (±7.2)	28.8 (±6.0)
Race/ethnicity		
White	42.3 (±4.5)	32.1 (±4.9)
Black	38.7 (±6.1)	28.3 (±5.3)
Hispanic	19.2 (±6.9)	17.8 (±6.3)
Other	29.9 (±24.0)	31.8 (±17.8)
Total	39.1 (±4.3)	29.7 (±4.3)

† Ninety-five percent confidence interval.

TABLE MS-11. Percentage of middle school never and current smoking students who report currently living with someone who smokes cigarettes, by gender, grade, and race/ethnicity: North Carolina Youth Tobacco Survey, 2009—Eastern (Coastal).

	Never Smoker	Current Smoker
Gender		
Female	35.3 (±4.5)†	58.7 (±18.7)
Male	36.9 (±6.6)	72.6 (±15.3)
Grade		
Sixth	34.2 (±5.3)	44.6 (±44.3)
Seventh	39.3 (±7.7)	59.6 (±19.1)
Eighth	34.6 (±5.5)	75.8 (±13.7)
Race/ethnicity		
White	35.6 (±4.1)	70.7 (±16.6)
Black	38.2 (±6.0)	69.3 (±16.1)
Hispanic	26.5 (±11.6)	44.5 (±27.6)
Other	42.1 (±11.8)	55.7 (±56.2)
Total	36.0 (±4.1)	65.9 (±11.3)

† Ninety-five percent confidence interval.

TABLE MS-12. Percentage of middle school current smoking students who report quitting perceptions, intention to quit and cessation practices, by gender, grade, and race/ethnicity: North Carolina Youth Tobacco Survey, 2009—Eastern (Coastal).

	Who want to stop smoking cigarettes	Tried to quit smoking at least once in the past 12 months-	When they last tried to quit, stayed off cigarettes for less than 30 days	Have ever participated in a program to help quit using tobacco
Gender				
Female	34.1 (±16.3)†	68.1 (±16.2)	28.5 (±15.0)	6.6 (±9.9)
Male	50.3 (±15.6)	71.0 (±12.8)	38.8 (±21.0)	3.9 (±5.2)
Grade				
Sixth	42.2 (±44.7)	73.5 (±39.2)	58.3 (±39.2)	0.0 (±0.0)
Seventh	43.7 (±16.0)	59.8 (±11.8)	27.6 (±12.9)	10.8 (±9.8)
Eighth	45.5 (±22.5)	77.7 (±21.4)	35.6 (±26.8)	0.0 (±0.0)
Race/ethnicity				
White	34.8 (±16.3)	58.6 (±18.9)	35.9 (±17.3)	4.7 (±7.1)
Black	56.1 (±38.9)	75.5 (±23.3)	24.7 (±21.8)	7.2 (±10.3)
Hispanic	50.6 (±47.3)	90.6 (±10.0)	47.5 (±33.0)	0.0 (±0.0)
Other	100.0 (±0.0)	81.8 (±34.6)	56.1 (±45.6)	0.0 (±0.0)
Total	44.3 (±11.2)	69.8 (±12.4)	34.3 (±13.7)	4.9 (±5.2)

† Ninety-five percent confidence interval.

TABLE MS-13. Percentage of middle school never and current smoking students who report smoking perceptions, by gender, grade, and race/ethnicity: North Carolina Youth Tobacco Survey, 2009— Eastern (Coastal) “Think young people who smoke cigarettes have more friends”

	Never Smoker	Current Smoker
Gender		
Female	16.7 (±4.2)†	65.6 (±17.9)
Male	18.4 (±4.5)	71.0 (±13.0)
Grade		
Sixth	15.2 (±4.8)	34.9 (±40.8)
Seventh	22.6 (±4.9)	65.3 (±14.8)
Eighth	15.4 (±5.8)	77.7 (±15.2)
Race/ethnicity		
White	10.0 (±3.4)	64.0 (±19.3)
Black	26.9 (±5.4)	74.2 (±11.9)
Hispanic	25.7 (±8.0)	64.2 (±22.2)
Other	25.7 (±18.0)	56.1 (±45.6)
Total	17.5 (±3.4)	67.6 (±10.6)

† Ninety-five percent confidence interval.

TABLE MS-14. Percentage of middle school never and current smoking students who report smoking perceptions, by gender, grade, and race/ethnicity: North Carolina Youth Tobacco Survey, 2009—Eastern (Coastal). “Think it is safe to smoke a year or two, as long as you quit after that”

	Never Smoker	Current Smoker
Gender		
Female	4.2 (±1.8)†	33.2 (±20.3)
Male	4.5 (±2.0)	24.7 (±14.5)
Grade		
Sixth	6.6 (±3.1)	6.6 (±13.3)
Seventh	2.4 (±1.4)	31.1 (±10.1)
Eighth	3.3 (±2.3)	30.1 (±28.5)
Race/ethnicity		
White	2.6 (±1.2)	32.3 (±21.9)
Black	6.2 (±2.6)	18.8 (±13.7)
Hispanic	7.7 (±5.7)	38.9 (±52.5)
Other	7.2 (±12.4)	0.0 (±0.0)
Total	4.3 (±1.6)	27.8 (±14.7)

† Ninety-five percent confidence interval.

TABLE HS-1. Percentage of high school students who report ever using* any tobacco product (cigarettes, cigars, smokeless tobacco) by gender, grade, and race/ethnicity: North Carolina Youth Tobacco Survey, 2009—Eastern (Coastal)

	Any tobacco	Cigarettes	Cigars	Smokeless tobacco
Gender				
Female	48.8 (±4.8)	44.0 (±5.4)	22.9 (±3.2)	8.3 (±2.1)
Male	61.6 (±4.8)	50.0 (±4.1)	36.6 (±4.4)	28.8 (±4.4)
Grade				
Ninth	52.0 (±6.8)	43.9 (±5.8)	27.5 (±5.4)	20.6 (±7.2)
Tenth	52.6 (±10.5)	45.7 (±10.2)	26.4 (±6.9)	13.9 (±4.8)
Eleventh	53.1 (±7.3)	45.7 (±10.1)	29.7 (±6.8)	16.4 (±6.4)
Twelfth	65.5 (±9.0)	54.7 (±7.2)	36.3 (±8.1)	23.0 (±9.0)
Race/ethnicity				
White	53.4 (±5.1)	44.6 (±4.9)	31.4 (±3.7)	24.9 (±5.6)
Black	57.8 (±5.7)	50.0 (±5.3)	28.2 (±4.7)	10.9 (±3.2)
Hispanic	52.4 (±10.2)	46.8 (±10.3)	28.5 (±11.1)	16.8 (±7.6)
Other	64.3 (±14.5)	56.4 (±16.3)	25.6 (±10.0)	18.0 (±13.8)
Total	55.3 (±3.7)	47.1 (±3.7)	29.8 (±2.8)	18.5 (±3.1)

*Ever use of cigarettes was determined by asking, "Have you ever tried cigarette smoking, even one or two puffs?" Ever use of cigars was determined by asking, "Have you ever tried smoking cigars, cigarillos, or little cigars, even one or two puffs?" Ever use of smokeless tobacco was determined by asking, "Have you ever used chewing tobacco, snuff, or dip, such as Redman, Levi Garrett, Beechnut, Skoal, Skoal Bandits, or Copenhagen?" Ever use of bidis was determined by asking, "Have you ever tried smoking bidis, even one of two puffs?"

† Ninety-five percent confidence interval.

TABLE HS-2. Percentage of high school students who report current use of any tobacco product (cigarettes, cigars, smokeless tobacco, pipes, or bidis) by gender, grade, and race/ethnicity: North Carolina Youth Tobacco Survey, 2009 Eastern (Coastal).

	Any tobacco*	Cigarettes	Cigars	Smokeless tobacco	Pipes	Bidis
Gender						
Female	18.1 (±3.4)	11.8 (±2.4)	7.9 (±2.2)	2.0 (±1.3)	1.0 (±0.9)	2.7 (±1.2)
Male	33.5 (±6.3)	22.2 (±3.5)	15.7 (±4.5)	14.0 (±4.1)	6.7 (±2.9)	5.9 (±3.1)
Grade						
Ninth	27.2 (±6.1)	18.3 (±5.2)	11.9 (±5.0)	11.9 (±5.1)	6.1 (±3.6)	6.0 (±3.5)
Tenth	24.0 (±8.4)	14.3 (±5.7)	13.3 (±5.0)	6.8 (±3.1)	2.8 (±2.2)	3.1 (±2.2)
Eleventh	22.1 (±6.7)	14.8 (±5.5)	8.4 (±5.0)	4.8 (±3.9)	3.0 (±2.6)	4.1 (±1.9)
Twelfth	30.9 (±7.4)	21.6 (±7.0)	13.7 (±4.0)	8.4 (±3.3)	4.1 (±1.7)	3.9 (±2.6)
Race/ethnicity						
White	28.5 (±5.6)	21.3 (±4.8)	10.2 (±3.6)	11.7 (±5.0)	3.9 (±2.5)	2.7 (±1.3)
Black	23.5 (±4.0)	12.5 (±3.8)	14.0 (±3.3)	4.0 (±1.2)	3.6 (±1.8)	5.9 (±2.2)
Hispanic	22.2 (±9.0)	17.1 (±8.1)	13.0 (±7.7)	5.9 (±4.7)	4.4 (±3.2)	5.7 (±4.9)
Other	34.7 (±17.8)	18.0 (±16.4)	19.2 (±6.2)	9.4 (±8.3)	19.7 (±13.8)	12.7 (±12.4)
Total	26.1 (±4.2)	17.3 (±2.7)	12.0 (±3.0)	8.2 (±2.8)	4.1 (±2.0)	4.3 (±1.7)

*Current use of cigarettes or cigars or smokeless tobacco or pipes or bidis or kreteks on 1 of the 30 days preceding the survey.

† Ninety-five percent confidence interval.

TABLE HS-3. Percentage of high school students who report first using* cigarettes before 11 years of age and ever smoking 100 cigarettes in their lifetime, by gender, grade, race/ethnicity: North Carolina Youth Tobacco Survey, 2009— Eastern (Coastal)

	Ever smokers who smoked first whole cigarette before age 11	Ever smokers who smoked 100+ cigarettes in their lifetime
Gender		
Female	10.2 (±5.3)†	10.5 (±6.4)
Male	16.1 (±4.4)	26.3 (±5.4)
Grade		
Ninth	20.7 (±4.6)	20.9 (±6.9)
Tenth	16.1 (±6.3)	15.1 (±7.3)
Eleventh	5.2 (±4.7)	16.9 (±6.6)
Twelfth	10.1 (±7.0)	23.0 (±13.1)
Race/ethnicity		
White	14.9 (±5.3)	30.1 (±8.3)
Black	12.9 (±5.2)	7.8 (±4.5)
Hispanic	4.5 (±5.1)	9.7 (±10.1)
Other	29.6 (±31.9)	28.6 (±27.6)
Total	13.7 (±3.2)	19.2 (±5.2)

*Age of initiation was determined by asking students these questions: "How old were you when you smoked a whole cigarette for the first time?"

† Ninety-five percent confidence interval.

TABLE HS-4. Percentage of high school students who report smoking cigarettes on school property during the 30 days preceding the survey, by gender, grade, race/ethnicity: North Carolina Youth Tobacco Survey, 2009— Eastern (Coastal)

	Smoked on school property past 30 days
Gender	
Female	2.0 (±1.1)†
Male	9.5 (±3.4)
Grade	
Ninth	7.7 (±2.5)
Tenth	4.3 (±3.0)
Eleventh	4.1 (±3.7)
Twelfth	7.7 (±4.2)
Race/ethnicity	
White	6.8 (±3.3)
Black	5.3 (±3.0)
Hispanic	6.2 (±4.6)
Other	1.5 (±3.0)
Total	6.1 (±2.5)

† Ninety-five percent confidence interval.

TABLE HS-5. Percentage of high school students who report frequently using* cigarettes, by gender, grade, race/ethnicity: North Carolina Youth Tobacco Survey, 2009— Eastern (Coastal).

	Frequent cigarette smoking
Gender	
Female	3.1 (±2.0)†
Male	9.3 (±3.5)
Grade	
Ninth	5.2 (±2.6)
Tenth	5.3 (±3.7)
Eleventh	4.8 (±3.0)
Twelfth	10.7 (±5.8)
Race/ethnicity	
White	8.6 (±3.9)
Black	3.9 (±2.2)
Hispanic	4.8 (±3.9)
Other	4.0 (±3.7)
Total	6.3 (±2.4)

* Smoked cigarettes, on 20 of the 30 days preceding the survey

† Ninety-five percent confidence interval.

TABLE HS-6. Percentage of high school current smoking students who report their primary sources of cigarettes, by social source, direct purchase, and other sources: North Carolina Youth Tobacco Survey, 2009— Eastern (Coastal).

	Current Smoker
Social Sources:	
Gave someone else money to buy them for me	30.6 (±8.2)†
Borrowed (or bummed) them from someone else	21.1 (±8.5)
Person 18 years or older gave them to me	9.2 (±3.9)
Direct Purchase:	
Bought them in a store such as a convenience store, supermarket, discount store, or gas station	16.2 (±5.7)
Bought them from a vending machine	3.9 (±2.9)
Other Sources:	
Took them from store or family member	2.0 (±1.4)
Got them some other way	16.9 (±6.3)
Total	100

† Ninety-five percent confidence interval.

TABLE HS-7. Percentage of high school students who report smoking intentions and perceptions about smoking to initiate smoking, by gender, grade, and race/ethnicity: North Carolina Youth Tobacco Survey, 2009— Eastern (Coastal)

	Never smoked who will not try a cigarette soon	Never smoked who will definitely not smoke cigarettes during the next year	Never smoked who think they will not smoke if one of their best friends offers them a cigarette	Have been told by at least one parent (or guardian) about the dangers of tobacco use	Think people can get addicted to using tobacco just like getting addicted to cocaine or heroin	Think young people who smoke cigarettes have more friends	Think smoking cigarettes makes young people look cool or fit in	Never smokers who are susceptible to start smoking
Gender								
Female	96.3 (±2.6)†	77.4 (±4.5)	82.3 (±5.7)	62.6 (±4.4)	94.4 (±2.7)	23.5 (±3.9)	9.9 (±3.0)	27.3 (±5.2)
Male	93.8 (±4.0)	84.0 (±3.9)	83.3 (±4.2)	64.3 (±5.3)	82.5 (±3.2)	31.8 (±5.7)	22.7 (±3.9)	25.3 (±4.1)
Grade								
Ninth	90.9 (±5.4)	75.5 (±6.5)	77.8 (±8.4)	68.8 (±5.0)	86.1 (±3.7)	31.3 (±8.3)	20.8 (±5.0)	32.6 (±6.9)
Tenth	96.1 (±3.3)	84.6 (±4.7)	85.1 (±7.3)	65.6 (±8.1)	91.0 (±3.6)	29.2 (±7.4)	16.0 (±4.4)	22.8 (±7.9)
Eleventh	97.6 (±2.4)	77.3 (±6.2)	81.2 (±5.6)	63.0 (±5.6)	87.5 (±6.3)	25.2 (±12.7)	12.5 (±5.4)	29.1 (±6.6)
Twelfth	98.3 (±3.7)	87.7 (±6.4)	90.6 (±6.1)	53.7 (±11.3)	89.7 (±3.8)	23.2 (±5.3)	13.7 (±6.0)	16.9 (±10.8)
Race/ethnicity								
White	95.2 (±2.7)	80.6 (±3.6)	81.0 (±4.1)	64.0 (±6.6)	91.0 (±2.6)	20.2 (±5.4)	15.1 (±3.0)	25.0 (±4.6)
Black	94.7 (±3.9)	79.7 (±5.9)	84.5 (±6.0)	62.2 (±3.7)	86.0 (±4.2)	34.7 (±6.8)	17.4 (±6.2)	29.0 (±5.3)
Hispanic	96.6 (±6.2)	80.9 (±12.5)	84.8 (±8.0)	64.9 (±8.9)	83.8 (±4.9)	42.8 (±9.8)	17.6 (±5.9)	27.9 (±15.1)
Other	100.0 (±0.0)	90.7 (±9.2)	90.7 (±9.2)	69.4 (±12.7)	84.2 (±9.6)	34.3 (±17.2)	20.1 (±11.1)	9.3 (±9.2)
Total	95.2 (±2.5)	80.4 (±2.9)	82.7 (±3.7)	63.4 (±3.9)	88.5 (±2.8)	27.6 (±4.7)	16.2 (±3.3)	26.5 (±3.4)

* Students were considered not susceptible if they answered, "No, will not try a cigarette soon" and "Definitely no, will not smoke in the next year" and "Definitely no, would not smoke if best friend offered." All other students were considered susceptible.

† Ninety-five percent confidence interval.

TABLE HS-8. Percentage of high school students who report media and advertising influence Regarding tobacco and receptivity to tobacco advertising*, by gender, grade, and race/ethnicity: North Carolina Youth Tobacco Survey, 2009— Eastern (Coastal)

	Saw or heard anti-smoking commercials during the past 30 days	Watch TV or movies who see actors using tobacco (most or some of the time)	Use Internet and see Internet ads for tobacco products (most or some of the time)	Use Internet, watch TV, or go to movies who see (most or some of the time) ads for tobacco products	Receptive to tobacco advertising
Gender					
Female	70.4 (±2.8) †	86.2 (±2.8)	48.2 (±3.8)	89.1 (±2.3)	8.7 (±2.3)
Male	62.9 (±3.6)	84.3 (±3.3)	49.9 (±5.7)	86.5 (±3.5)	14.8 (±3.8)
Grade					
Ninth	65.7 (±6.3)	85.5 (±3.5)	53.2 (±7.2)	87.8 (±2.7)	13.7 (±3.7)
Tenth	63.5 (±6.4)	82.9 (±3.9)	51.3 (±7.2)	88.5 (±4.1)	8.6 (±3.7)
Eleventh	67.7 (±4.4)	86.4 (±4.7)	42.6 (±6.3)	88.5 (±4.1)	11.3 (±4.5)
Twelfth	70.4 (±8.5)	86.9 (±5.0)	46.5 (±8.1)	86.2 (±5.3)	12.0 (±4.2)
Race/ethnicity					
White	68.1 (±4.0)	85.6 (±4.0)	49.1 (±4.2)	88.4 (±2.6)	14.8 (±3.7)
Black	65.0 (±4.7)	85.2 (±3.9)	49.4 (±5.2)	87.1 (±3.4)	8.0 (±2.6)
Hispanic	59.8 (±12.1)	87.8 (±4.2)	46.4 (±12.0)	91.0 (±4.9)	11.3 (±7.5)
Other	76.3 (±23.9)	78.0 (±17.1)	46.1 (±16.8)	80.6 (±15.8)	5.5 (±6.6)
Total	66.6 (±2.8)	85.4 (±2.3)	49.0 (±4.0)	87.8 (±2.0)	11.7 (±2.3)

The percentage of students who received anything with a tobacco company name or picture on it AND who would (Definitely Yes or Probably Yes) use or wear something with a tobacco company name or picture on it.

† Ninety-five percent confidence interval.

TABLE HS-9. Percentage of high school students who report exposure to anti-tobacco education in school or community in the past year, by gender, grade, and race/ethnicity: North Carolina Youth Tobacco Survey, 2009— Eastern (Coastal)

	Were taught about the dangers of tobacco use at school	At school this year practiced ways to say 'No' to tobacco
Gender		
Female	33.1 (±3.8)†	16.0 (±5.3)
Male	31.7 (±3.4)	16.1 (±3.0)
Grade		
Ninth	45.9 (±5.2)	24.2 (±7.5)
Tenth	32.1 (±6.2)	16.5 (±7.7)
Eleventh	23.6 (±3.5)	12.3 (±5.6)
Twelfth	23.5 (±9.2)	8.3 (±6.1)
Race/ethnicity		
White	29.3 (±4.5)	13.1 (±4.9)
Black	36.7 (±4.3)	20.2 (±4.3)
Hispanic	32.6 (±8.7)	17.1 (±7.5)
Other	23.6 (±15.9)	10.4 (±8.1)
Total	32.4 (±2.7)	16.1 (±3.6)

† Ninety-five percent confidence interval.

TABLE HS-10. Percentage of high school never smoking students who report they were in the same room or rode in car with someone who was smoking on 1 of the past 7 days, by gender, grade, race/ethnicity: North Carolina Youth Tobacco Survey, 2009—Eastern (Coastal).

	Were in the same room with someone who was smoking a cigarette on 1+ days during past 7 days	Rode in the same car with someone who was smoking a cigarette on 1+ days during past 7 days
Gender		
Female	46.1 (±7.2)†	31.6 (±7.6)
Male	41.8 (±5.0)	25.2 (±6.1)
Grade		
Ninth	47.5 (±8.1)	34.0 (±5.9)
Tenth	41.6 (±6.4)	25.8 (±6.9)
Eleventh	41.7 (±9.0)	23.2 (±6.7)
Twelfth	45.5 (±13.8)	31.2 (±15.5)
Race/ethnicity		
White	51.4 (±6.4)	32.4 (±6.6)
Black	34.9 (±6.4)	24.2 (±6.6)
Hispanic	36.3 (±15.7)	24.2 (±15.3)
Other	34.9 (±19.8)	24.6 (±20.2)
Total	44.1 (±4.6)	28.7 (±5.1)

† Ninety-five percent confidence interval.

TABLE HS-11. Percentage of high school never and current smoking students who report living with someone who currently smokes cigarettes, by gender, grade, and race/ethnicity: North Carolina Youth Tobacco Survey, 2009—Eastern (Coastal)

	Never Smoker	Current Smoker
Gender		
Female	34.3 (±6.3)†	64.8 (±9.1)
Male	28.7 (±6.3)	70.7 (±7.7)
Grade		
Ninth	34.7 (±7.3)	72.7 (±12.1)
Tenth	30.6 (±7.8)	67.1 (±12.3)
Eleventh	25.9 (±10.7)	64.2 (±17.2)
Twelfth	34.8 (±11.2)	68.0 (±12.3)
Race/ethnicity		
White	33.6 (±7.5)	75.6 (±8.4)
Black	29.5 (±7.5)	66.6 (±15.3)
Hispanic	28.9 (±11.9)	20.8 (±10.8)
Other	28.3 (±20.6)	39.7 (±36.9)
Total	31.7 (±5.1)	69.1 (±5.9)

† Ninety-five percent confidence interval.

TABLE HS-12. Percentage of high school current smoking students who report quitting perceptions, intention to quit and cessation practices, by gender, grade, and race/ethnicity: North Carolina Youth Tobacco Survey, 2009— Eastern (Coastal)

	Who want to stop smoking cigarettes	Tried to quit smoking at least once in the past 12 months-	When they last tried to quit, stayed off cigarettes for less than 30 days	Have ever participated in a program to help quit using tobacco
Gender				
Female	55.6 (±16.3)†	50.1 (±14.8)	23.2 (±9.8)	3.0 (±4.4)
Male	44.2 (±7.2)	56.5 (±8.9)	31.7 (±7.1)	7.0 (±4.9)
Grade				
Ninth	50.0 (±12.6)	57.4 (±16.2)	38.4 (±12.1)	11.9 (±8.2)
Tenth	49.8 (±19.7)	61.6 (±12.9)	19.6 (±11.3)	4.2 (±7.2)
Eleventh	54.6 (±15.4)	57.8 (±14.4)	37.7 (±9.3)	4.9 (±7.7)
Twelfth	38.2 (±14.8)	42.6 (±10.6)	22.3 (±7.8)	3.0 (±5.8)
Race/ethnicity				
White	46.6 (±8.4)	55.1 (±8.7)	33.1 (±9.4)	5.0 (±4.4)
Black	50.9 (±12.5)	51.8 (±13.3)	21.3 (±11.3)	6.9 (±7.4)
Hispanic	47.3 (±26.2)	70.5 (±16.8)	40.7 (±26.1)	20.3 (±26.0)
Other	88.3 (±23.6)	88.6 (±24.4)	10.0 (±22.3)	0.0 (±0.0)
Total	48.6 (±6.6)	55.4 (±7.3)	29.8 (±5.6)	6.3 (±4.3)

† Ninety-five percent confidence interval.

TABLE HS-13. Percentage of high school never and current smoking students who report smoking perceptions, by gender, grade, and race/ethnicity: North Carolina Youth Tobacco Survey, 2009—Eastern (Coastal)

“Think young people who smoke cigarettes have more friends”

	Never Smoker	Current Smoker
Gender		
Female	17.5 (±4.3)†	42.2 (±13.6)
Male	24.1 (±7.2)	36.9 (±7.6)
Grade		
Ninth	24.8 (±8.7)	46.0 (±12.7)
Tenth	19.0 (±7.7)	54.1 (±12.0)
Eleventh	19.3 (±13.4)	31.9 (±13.6)
Twelfth	15.8 (±6.9)	27.4 (±17.8)
Race/ethnicity		
White	15.2 (±6.1)	35.0 (±11.5)
Black	24.8 (±6.4)	47.3 (±16.8)
Hispanic	41.6 (±13.0)	46.1 (±22.8)
Other	30.3 (±30.0)	26.7 (±38.1)
Total	20.5 (±4.7)	39.3 (±8.7)

† Ninety-five percent confidence interval.

TABLE HS-14. Percentage of high school never and current smoking students who report smoking perceptions, by gender, grade, and race/ethnicity: North Carolina Youth Tobacco Survey, 2009— Eastern (Coastal)

“Think it is safe to smoke a year or two, as long as you quit after that”

	Never Smoker	Current Smoker
Gender		
Female	2.6 (±1.5)†	19.6 (±10.2)
Male	7.6 (±3.9)	23.1 (±6.7)
Grade		
Ninth	4.6 (±3.0)	21.5 (±12.7)
Tenth	3.4 (±2.5)	27.5 (±11.3)
Eleventh	7.9 (±3.7)	34.9 (±18.3)
Twelfth	3.3 (±2.9)	10.3 (±9.9)
Race/ethnicity		
White	4.3 (±2.3)	19.2 (±6.8)
Black	5.5 (±3.1)	26.9 (±10.7)
Hispanic	6.8 (±5.0)	29.5 (±22.3)
Other	8.8 (±15.2)	21.9 (±17.7)
Total	4.9 (±1.8)	22.0 (±5.3)

† Ninety-five percent confidence interval.