

SURVEILLANCE UPDATE

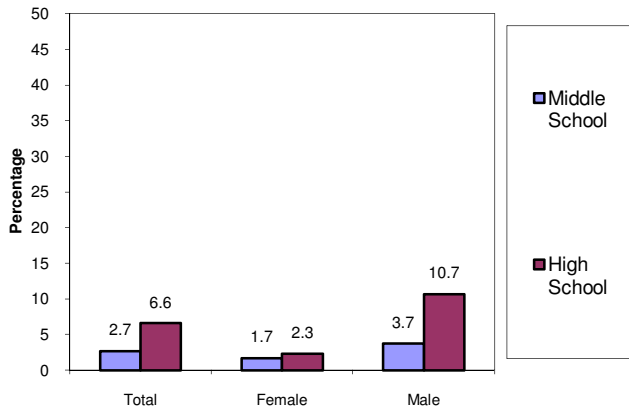


North Carolina Tobacco Prevention and Control Branch -- June 2012

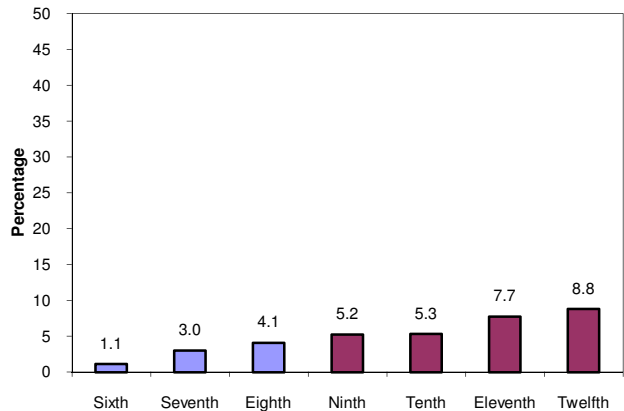


2011 N.C. Youth Tobacco Survey: Current Smokeless Tobacco Use

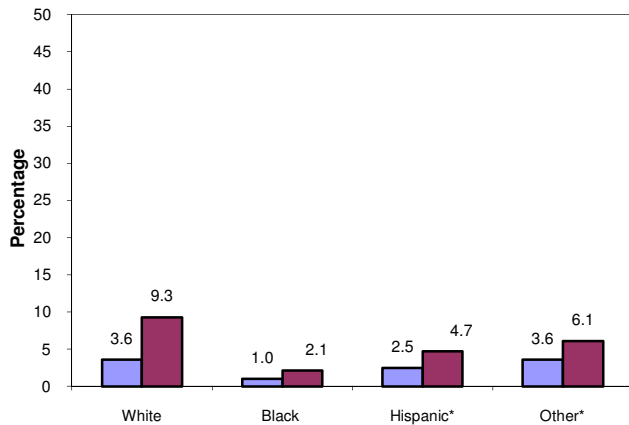
Percentage of N.C. middle and high school students who report using smokeless tobacco in the last month, by gender: N.C. YTS, 2011



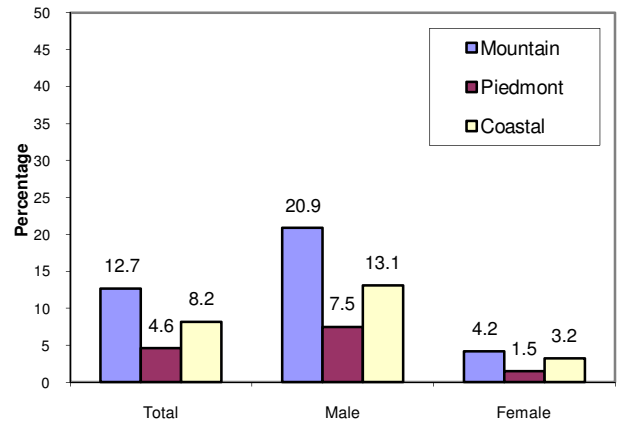
Percentage of N.C. middle and high school students who report using smokeless tobacco in the last month, by grade level: N.C. YTS, 2011



Percentage of N.C. middle and high school students who report using smokeless tobacco in the last month, by race/ethnicity: N.C. YTS, 2011



Percentage of N.C. high school students who report current smokeless tobacco use, by region: N.C. YTS, 2011



Weighted to provide estimates representative of the public middle and high school student population; Persons reported having used smokeless tobacco within the past 30 days. Specific data on 95% confidence intervals and regional definitions is at the N.C. YTS website.

*Use caution when interpreting. Results based on small sample size.

The N.C. Youth Tobacco Survey (N.C. YTS) provides a critical source of public health data for understanding the scope of the tobacco problem and measuring progress toward overall goals among youth. N.C. 2011 YTS is a comprehensive statewide representative sample of more than 10,000 middle and high school students. Every other year a core set of CDC tobacco-related questions are asked. In addition, states add questions related to local program factors. The sampling scheme is now intended to generate significant numbers for regional data (West, Central and East). Caution should be used in interpreting results when only a small number of respondents have answered the question. See the N.C. Tobacco Prevention and Control Branch website for more information.

